



January 20, 2020

Dear All:

You are receiving this communication to keep you apprised of the status of the ongoing environmental monitoring activities associated with the closed Waste Management (WM) Richmond Landfill property.

We are providing, for your information, the notice supplied to MECP on January 20, 2020. The notice summarizes a landfill leachate release within the site boundaries. WM's environmental consultant is investigating the potential impacts from these events and has collected surface water samples downstream from the releases. An action plan will be developed when the sampling results are available.

Regards,

Bill McDonough
Manager, Richmond Landfill
Waste Management of Canada Corporation

Encl.



MEMORANDUM

DATE: January 20, 2020
TO: Trevor Dagilis, District Manager, Ministry of the Environment, Conservation and Parks (MECP)
CC: David Arnott, Kyle Stephenson, Shawn Trimper and Peter Taylor (MECP)
Chris Prucha, Bill McDonough and Jim Forney (WM)
FROM: François Richard (BluMetric)
PROJECT NO: 200172-03
SUBJECT: Notification of On-Site Leachate Release, WM Richmond Landfill, Town of Greater Napanee
Ref: MECP Spill Action Centre Reference Number: 5065-BKVRAQ

This memorandum is provided on behalf of Waste Management of Canada Corporation in relation to recent leachate releases to surface that have occurred on site.

BACKGROUND

The Richmond Landfill is located at 1271 Beechwood Road, Napanee, and has been closed since June 30, 2011. Landfill leachate is collected from two collection points (North Chamber and South Chamber) located along the perimeter of the waste mound (see Figure 1). Leachate is typically hauled off-site for treatment at the Napanee Waste Water Treatment Plant (WWTP). On occasions when the WWTP is at capacity and cannot accept leachate from the site, leachate is pumped to the lined North Lagoon where it is stored temporarily, until such time as it can be hauled to the WWTP for treatment.

At approximately 10 AM on Tuesday January 14, 2020 approximately 3,500 gallons of leachate were spilled onto a wooded area of the Richmond Landfill property, shown on Figure 1. WM had loaded a tanker truck with approximately 3,500 gallons of leachate from the North Chamber leachate sump of the landfill. It was intended to go to the Napanee WWTP but the plant was not accepting leachate on Tuesday due to high rains over the weekend. WM's on-site operator directed the contractor to haul the load of leachate to the contingency North Lagoon (see Figure 1). As the tanker truck was driving across fields to get to the lagoon from the west, the ground was beginning to thaw and the driver was concerned he would get stuck. On-site personnel directed the contractor to back their truck to the edge of a wooded area and dump the 3,500 gallons of leachate.



INITIAL ACTION PLAN

BluMetric was instructed by WM to investigate the leachate release. On Thursday, January 16, 2020, field personnel went to the site to take pictures to document conditions in the area and to collect surface water samples in the vicinity of and downstream from the release point. Surface water drainage is inferred from ground surface topography to be towards the east-northeast from the release point. Samples were collected from ponded water along the assumed flow path at three locations, including near the release point, near monitoring well M60-1 and in the drainage ditch that runs to the south along the west side of North Lagoon; a sample was also collected from Marysville Creek at downstream sampling location S3. Additional samples were collected on Friday January 17, 2020 from the North Chamber sump, the Northeast and Northwest stormwater collection ponds, and downstream sampling location S8R located at the outlet from the south field stormwater collection pond system.

Samples were sent to BV Laboratories of Mississauga, Ontario, and rush analyses were requested for the list of parameters included in Tables 8 (surface water) and 10 (leachate samples) of the Environmental Monitoring Plan (EMP) for the site.

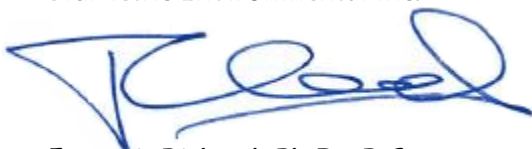
A site plan and sampling locations are shown on Figure 1.

CLOSING

The analytical results from this sampling event will be reported when received from the laboratory. An action plan will be developed as appropriate based on the results.

We trust the above information is satisfactory. If you have any questions or need further information regarding the completed work please do not hesitate to contact the undersigned.

Respectfully submitted,
BluMetric Environmental Inc.

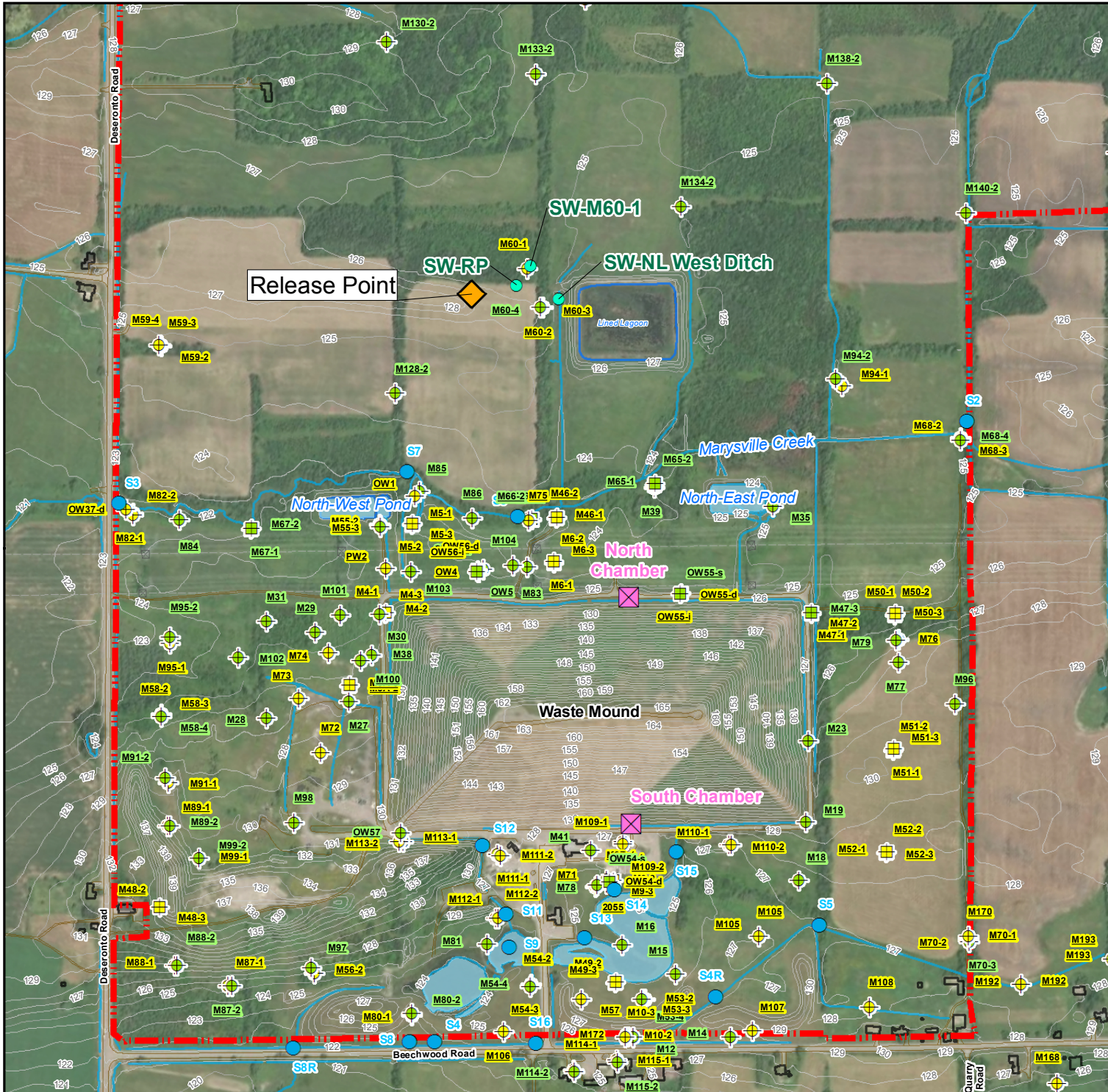


Francois Richard, Ph.D., P.Geo.
Senior Hydrogeologist

Encl.

FIGURES





LEGEND

- ◆ Release Point
- Surface Water Sampling Location
- Surface Water Sample
- ◻ Leachate Monitoring Locations
- ◆ Active Shallow Monitoring Well
- ◻ Active Intermediate Monitoring Well
- ◆ Active Shallow Monitoring Well
- ◆ Active Intermediate Monitoring Well
- Property Boundary
- Waterbody
- Building
- Hydro Tower
- Road
- Watercourse
- Overhead Power Line
- Waterbody
- Topographic Contours (1 masl)
- Major Contour
- Minor Contour

1				
REV.	DESCRIPTION	YY/MM/DD	BY	CHK

REFERENCES
 PROPRIETARY INFORMATION MAY NOT BE REPRODUCED OR DIVULGED WITHOUT PRIOR WRITTEN CONSENT OF BLUMETRIC ENVIRONMENTAL INC. DO NOT SCALE DRAWING.
 THIS DRAWING MAY HAVE BEEN REDUCED. ALL SCALE NOTATIONS INDICATED ARE BASED ON 8.5"x11" FORMAT DRAWINGS.

1:7,500

CLIENT

WASTE MANAGEMENT

PROJECT

WASTE MANAGEMENT RICHMOND LANDFILL LEACHATE RELEASE INVESTIGATION

TITLE

SITE PLAN AND MONITORING LOCATIONS

The Tower - The Woolen Mill,
 4 Catarqui St.,
 Kingston, Ontario, K7K 1Z7
 Tel: 613-531-2725
 Fax: 613-531-1852
 Email: info@blumetric.ca
 Web: http://www.blumetric.ca

PROJECT # 200172-03	DATE January 20, 2020
DRAWN AL	CHECKED FR
FIG NO. 01	REV 0

PHOTOGRAPHS

January 16, 2020





Release Point, looking north.



Release Ponding (Sampling Location SW-RP)



**Ponded water near monitoring well M60-1
(Sampling Location SW-M60-1).**



**Ditch flowing south along west side of N. Lagoon
(Sampling Location SW-NL)**